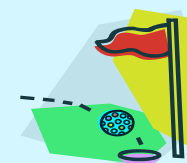




**St Mary Parish School ~ 15th Annual Golf Outing**  
 Saturday, September 29, 2012  
 Silver Spring Golf Course "Island Course" (1:00 pm shotgun start)  
 Registration 11:30 am



**"Golf Fees"**

**\*Foursome: \$350**

- ✓ Golf Cart
- ✓ Driving Range
- ✓ Buffet Dinner
- ✓ Welcome Bag

Pay by August 1<sup>st</sup>  
and get \$20 in  
Raffle Tickets!

**\*Individual Golfer: \$90**

- ✓ Golf Cart
- ✓ Driving Range
- ✓ Buffet Dinner
- ✓ Welcome Bag

Pay by August 1<sup>st</sup>  
and get \$5 in  
Raffle Tickets!

**\*Dinner Only: \$30**

**Super Ticket: \$25 (\$45 value)**

- ✓ Entry into 4 Hole-in-One Contests.
- ✓ Entry into Inside the Circle Game
- ✓ Entry into Beat the Pro
- ✓ 2 Mulligans
- ✓ \$5 worth of Raffle tickets

**50/50 Poker Game: \$10**

- ✓ Pick 3 cards at Registration
- ✓ Pick additional cards on the course
- ✓ Initial cards upon receipt
- ✓ Buy up to 4 cards at dinner for \$5
- ✓ Best hand splits the pot

**Mulligans: \$5 each (limit 4 per player)**

**Hole in One Games: \$5 each (4 available)**

Questions?  
Steve/Sharon Memory: 262-293-3628

**"Available Sponsorships"**

**Eagle Sponsorship: \$300**

Hole Sponsorship, Full page ad in golf program, Acknowledgement at dinner, Logo on Sponsor Board, Recognition in St Mary Parish Bulletin (1400 families), Recognition in schools newsletter (The Connection ~ 300 families)

**Birdie Sponsorship: \$150**

Hole Sponsorship, 1/4 page ad in golf program, Recognition in St Mary Parish Bulletin (1400 families), Recognition in schools newsletter (The Connection ~ 300 families)

**Par Sponsorship: \$50**

Special Mention in the golf program, Recognition in School newsletter (The Connection ~ 300 families)

**Dinner Sponsor: \$400**

1/2 page ad in golf program, Logo on Sponsor Board, Signage at all Dinner Tables

**Golf Cart Sponsor: \$300**

Logo on player's golf carts, Program Recognition, Logo on Sponsor Board

**Score Card Sponsor: \$300**

Logo on player's score cards, Program Recognition, Logo on Sponsor Board

**Other Donations Welcome: Raffle Items, Silent Auction Items, Golfers Gifts, Hole Prizes, etc.**

Program Recognition, Recognition in School Newsletter (The Connection ~ 300 families)



**Golfer & Sponsorship Registration:**

\*Foursome x \$ \_\_\_\_\_ x \$350 = \$ \_\_\_\_\_  
 \*Individual golfer \_\_\_\_\_ x \$90 = \$ \_\_\_\_\_  
 Super Ticket \_\_\_\_\_ x \$20 = \$ \_\_\_\_\_  
 Beat the Pro \_\_\_\_\_ x \$5 = \$ \_\_\_\_\_  
 Hole in One \_\_\_\_\_ x \$5 = \$ \_\_\_\_\_  
 Inside the Circle \_\_\_\_\_ x \$5 = \$ \_\_\_\_\_  
 Poker Hand \_\_\_\_\_ x \$10 = \$ \_\_\_\_\_  
 Raffle Tickets (25) \_\_\_\_\_ x \$20 = \$ \_\_\_\_\_  
 Mulligans (1) (4 max) \_\_\_\_\_ x \$5 = \$ \_\_\_\_\_  
 \*Dinner Only \_\_\_\_\_ x \$30 = \$ \_\_\_\_\_  
 Sponsorship Only \_\_\_\_\_ = \$ \_\_\_\_\_  
 \* payment due by September 14, 2012  
 Total Enclosed = \$ \_\_\_\_\_

Company \_\_\_\_\_  
 Contact \_\_\_\_\_

| <u>Golfer</u> | <u>E-mail</u> |
|---------------|---------------|
| _____         | _____         |
| _____         | _____         |
| _____         | _____         |
| _____         | _____         |

**Make Checks Payable to: St. Mary School**  
**Mail to: St. Mary School**  
**Attention Golf Committee**  
**N89 W16215 Cleveland Avenue**  
**Menomonee Falls, WI 53051**

**OR**  
 Credit Card (Visa or Master Card):  
 Name on Card: \_\_\_\_\_  
 Credit Card No: \_\_\_\_\_  
 Type: \_\_\_\_\_ Expiration: \_\_\_\_\_  
 Security Code: \_\_\_\_\_ Billing Zip: \_\_\_\_\_